

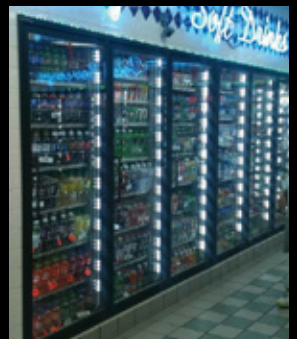


2021

Channel LEDs

www.neslight.com

NES Light
SMART SOLUTION



Channel Letter LEDs

CONTENTS

- P3. LED Kelvin Color
- P4. ECO3S 1.0W
- P5. ECO3S 0.72W
- P6. ECO3S 0.72W Color
- P7. RGB3S 0.72W
- P8. Mini3 0.48W
- P9. ECO4 1.4W
- P10. BOX3 Edge 1.5W
- P11. Lighting Installation

Channel letter led is ideal for demanding retail, food service and utility applications such as consumer retail, restaurant menu boards, movie poster displays, jewelry stores, trade shows, office lobbies and conference, hanging from overhead



LED Kelvin Color



- High-quality and dependable modules that are trusted globally
- Wide range of products with varied price and performance options to satisfy any LED needs
- Strict Quality Control for products that are always reliable
- Automated production facility with nearly 0% defect rate in modules
- Every department consists of experienced professionals to provide exceptional customized service
- Fully controlled system from design to packing to ensure consistency and quality

DURiTE ECO ECO3S 1.0W

Channel Letter LED Module



IP68

FEATURES

- Ensures excellent transmittance and uniform lighting
- 160 degree angle lens that spreads light evenly for no hot spots
- Specially designed durable cover that withstands harsh environment and protects the LED
- High luminous efficacy guaranteed up to 105 lm/W
- Easy installation with double sided 3M tape and screw holes
- IP68 Waterproof and approved by UL, CE, RoHS
- Non-Polarity technology makes better wiring
- Long life time 50,000 hours

DESCRIPTION

DURiTE ECO Series is Specialized for Channel Letter Signs.

The LED is powered by Seoul Semiconductor that makes high performance and durability as Tier 1 LED.

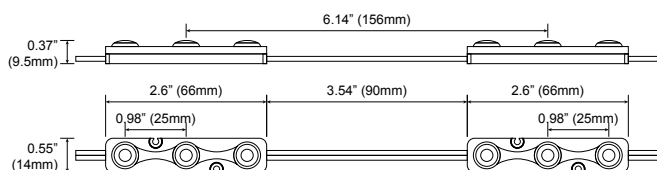
ECO has a built-in non-polarity function, so the installer works without worry about the wiring.

The ultrasonic welding technology performs for excellent waterproofing and protects LED from harsh environment.

SPECIFICATIONS

Model	DURiTE ECO3S 1.0W			Module Spacing	2 pcs/ft
Colors	3000K	6500K	10000K	Demension	2.6" x 0.55" x 0.37"
Lumens	100 lm/W	105 lm/W	105 lm/W	Weight	7.7g
Power	1W			Max in series	35 Mods
Input Voltage	12V DC			Operating Temp.	-4°F ~ 122°F / -20°C ~ 50°C
CRI	>80 Ra			Life Time	50,000
Beam Angle	160°			IP Rating	IP68 Waterproof

DIMENSION



COVERAGE CHART

Depth	4"	5"	6"	7"~10"
Max Stroke Single Row	8"	10"	12"	14"
Max Stroke Multi Rows	6"	10"	12"	14"
Mods per ft	2 pcs per ft			

Parameters can be adjusted according to the desired brightness.

DURiTE ECO ECO3S 0.72W

Channel Letter LED Module



FEATURES

- Ensures excellent transmittance and uniform lighting
- 160 degree angle lens that spreads light evenly for no hot spots
- Specially designed durable cover that withstands harsh environment and protects the LED
- High luminous efficacy guaranteed up to 83 lm/W
- Easy installation with double sided 3M tape and screw holes
- IP68 Waterproof and approved by UL, CE, RoHS
- Non-Polarity technology makes better wiring
- Long life time 50,000 hours

DESCRIPTION

DURiTE ECO Series is Specialized for Channel Letter Signs.

The LED is powered by Seoul Semiconductor that makes high performance and durability as Tier 1 LED.

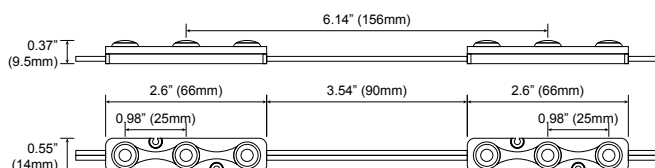
ECO has a built-in non-polarity function, so the installer works without worry about the wiring.

The ultrasonic welding technology performs for excellent waterproofing and protects LED from harsh environment.

SPECIFICATIONS

Model	DURiTE ECO3S 0.72W		Module Spacing	2 pcs/ft
Colors	6500K	10000K	Demension	2.6" x 0.55" x 0.37"
Lumens	60 lm/W	60 lm/W	Weight	7.7g
Power	0.72W		Max in series	35 Mods
Input Voltage	12V DC		Operating Temp.	-4°F ~ 122°F / -20°C ~ 50°C
CRI	>80 Ra		Life Time	50,000
Beam Angle	160°		IP Rating	IP68 Waterproof

DIMENSION



COVERAGE CHART

Depth	3"	4"	5"	6"~8"
Max Stroke Single Row	8"	10"	12"	14"
Max Stroke Multi Rows	6"	10"	12"	14"
Mods per ft	2 pcs per ft			

Parameters can be adjusted according to the desired brightness.

DURiTE ECO ECO3S 0.72W Red Color

Channel Letter LED Module

Red Color



IP68

FEATURES

- Ensures excellent transmittance and uniform lighting
- 160 degree angle lens that spreads light evenly for no hot spots
- Specially designed durable cover that withstands harsh environment and protects the LED
- Easy installation with double sided 3M tape and screw holes
- IP68 Waterproof and approved by UL, CE, RoHS
- Non-Polarity technology makes better wiring
- Long life time 50,000 hours

DESCRIPTION

DURiTE ECO Series is Specialized for Channel Letter Signs.

The LED is powered by Reliable Korean LED that makes high performance and durability as Tier 1 LED.

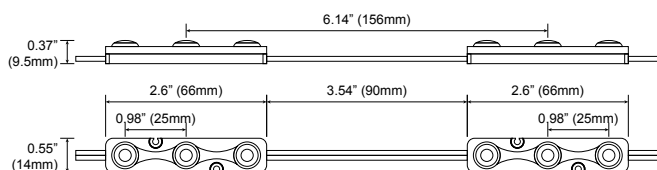
ECO has a built-in non-polarity function, so the installer works without worry about the wiring.

The ultrasonic welding technology performs for excellent waterproofing and protects LED from harsh environment.

SPECIFICATIONS

Model	ECO3S 0.72W Single Color	Module Spacing	2 pcs/ft
Colors	Red	Demension	2.6" x 0.55" x 0.37"
Wavelength(nm)	620~625(19lm/Mod)	Weight	7.7g
Power	0.72W	Max in series	35 Mods
Input Voltage	12V DC	Operating Temp.	-4°F ~ 122°F / -20°C ~ 50°C
Forward Current	60 mA	Life Time	50,000
Beam Angle	160°	IP Rating	IP68 Waterproof

DIMENSION



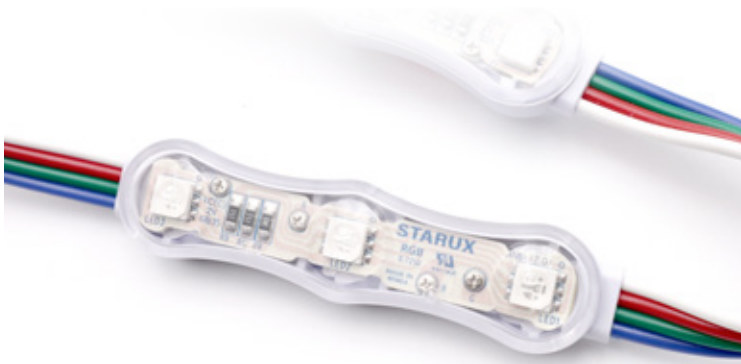
COVERAGE CHART

Depth	3"	4"	5"	6"~8"
Max Stroke Single Row	8"	10"	12"	14"
Max Stroke Multi Rows	6"	10"	12"	14"
Mods per ft	2 pcs per ft			

Parameters can be adjusted according to the desired brightness.

DURiTE ECO RGB3S 0.72W

Channel Letter LED Module



FEATURES

- Full color with natural color projection
- Ensures excellent transmittance and uniform lighting
- Specially designed durable cover that withstands harsh environment and protects the LED
- Easy installation with double sided 3M tape
- IP68 Waterproof and approved by UL, CE, RoHS
- Compact design with vivid and eliminates hot spots
- Long life time 50,000 hours

DESCRIPTION

DURiTE ECO Series is Specialized for Channel Letter Signs.

The LED is powered by Reliable Korean LED that makes high performance and durability as Tier 1 LED.

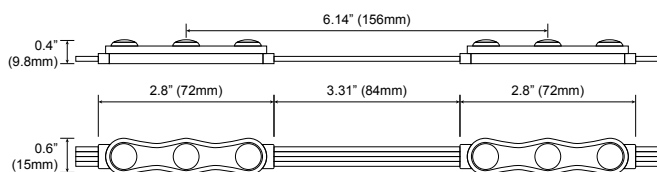
Starux's most cost-efficient model and easy installation with double sided 3M tape.

The ultrasonic welding technology performs for excellent waterproofing and protects LED from harsh environment.

SPECIFICATIONS

Model	ECO RGB3S 0.72W			Module Spacing	2 pcs/ft
Colors	RGB Full Color			Demension	2.8" x 0.6" x 0.4"
Wavelength(nm)	R:620~625	G:520~525	B:460~465	Weight	10g
Power	0.72W			Max in series	35 Mods
Input Voltage	12V DC			Operating Temp.	-4°F ~ 122°F / -20°C ~ 50°C
Forward Current	60 mA			Life Time	50,000
Beam Angle	150°			IP Rating	IP68 Waterproof

DIMENSION



COVERAGE CHART

Depth	3"	4"	5"	6"~8"
Max Stroke Single Row	8"	10"	12"	14"
Max Stroke Multi Rows	6"	10"	12"	14"
Mods per ft	2 pcs per ft			

Parameters can be adjusted according to the desired brightness.

DURiTE ECO MINI3 0.48W

Channel Letter LED Module



FEATURES

- Versatile wide angle lens with compact design
- Ensures excellent transmittance and uniform lighting
- 150 degree angle lens that spreads light evenly for no hot spots
- Specially designed durable cover that withstands harsh environment and protects the LED
- High luminous efficacy guaranteed up to 83 lm/W
- Easy installation with double sided 3M tape
- IP68 Waterproof and approved by UL, CE, RoHS
- Long life time 50,000 hours

DESCRIPTION

DURiTE ECO Series is Specialized for Channel Letter Signs.

The LED is powered by Reliable LED that makes high performance and durability as Tier 1 LED.

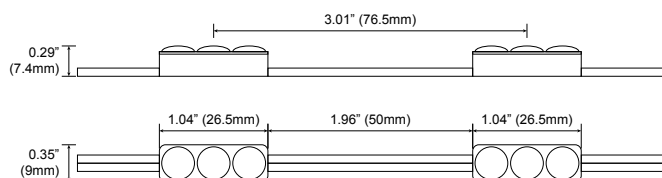
Starux's most cost-efficient model and easy installation with double sided 3M tape.

The ultrasonic welding technology performs for excellent waterproofing and protects LED from harsh environment.

SPECIFICATIONS

Model	MINI3 0.48W			Module Spacing	4 pcs/ft
Colors	3000K	6500K	10000K	Demension	1.04" x 0.35" x 0.32"
Lumens	40 lm/Mod	40 lm/Mod	40 lm/Mod	Weight	2.5g
Power	0.48W			Max in series	50 Mods
Input Voltage	12V DC			Operating Temp.	-4°F ~ 122°F / -20°C ~ 50°C
CRI	>80 Ra			Life Time	50,000
Beam Angle	150°			IP Rating	IP68 Waterproof

DIMENSION



COVERAGE CHART

Depth	3"	4"	5"
Max Stroke Single Row	6"	8"	10"
Max Stroke Multi Rows	6"	8"	10"
Mods per ft	4 pcs per ft		

Parameters can be adjusted according to the desired brightness.

DURiTE ECO ECO4 1.4W



FEATURES

- Starux's Constant Current drive with protection LED for long life time
- Ensures excellent transmittance and uniform lighting
- 160 degree angle lens that spreads light evenly for no hot spots
- Specially designed durable cover that withstands harsh environment and protects the LED
- High luminous efficacy guaranteed up to 95 lm/W
- Easy installation with double sided 3M tape and screw holes
- IP68 Waterproof and approved by UL, CE, RoHS
- Long life time 50,000 hours

DESCRIPTION

DURiTE ECO Series is Specialized for Channel Letter Signs.

The LED is powered by Reliable LED that makes high performance and durability as Tier 1 LED.

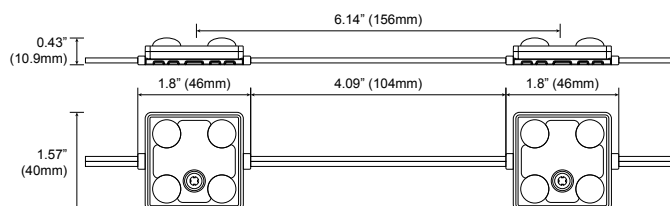
Starux's most cost-efficient model and easy installation with double sided 3M tape.

The ultrasonic welding technology performs for excellent waterproofing and protects LED from harsh environment.

SPECIFICATIONS

Model	ECO4 1.4W	Module Spacing	2 pcs/ft
Colors	10000K	Demension	1.8" x 1.57" x 0.43"
Lumens	95 lm/Mod	Weight	11g
Power	1.4W	Max in series	50 Mods
Input Voltage	12V DC	Operating Temp.	-4°F ~ 122°F / -20°C ~ 50°C
CRI	>80 Ra	Life Time	50,000
Beam Angle	160°	IP Rating	IP68 Waterproof

DIMENSION



COVERAGE CHART

Depth	5"	6"	7"	8"
Max Stroke Single Row	14"	16"	18"	20"
Max Stroke Multi Rows	12"	14"	16"	18"
Mods per ft	2 pcs per ft			

Parameters can be adjusted according to the desired brightness.

DURiTE ECO BOX3 Edge 1.5W



FEATURES

- Ensures excellent brightness and uniform lighting
- Suitable for minimum 3" depth cabinet signs
- Recommend 0.65ft ~ 4ft for double sides / 0.65ft ~ 1.6ft for single side
- Specially designed durable lens that withstands harsh environment and protects the LED
- Easy installation with double sided 3M tape and screw holes
- IP65 Waterproof and approved by UL, CE, RoHS
- Long life time 50,000 hours

DESCRIPTION

DURiTE ECO Series is Specialized for Channel Letter Signs.

The LED is powered by Reliable LED that makes high performance and durability as Tier 1 LED.

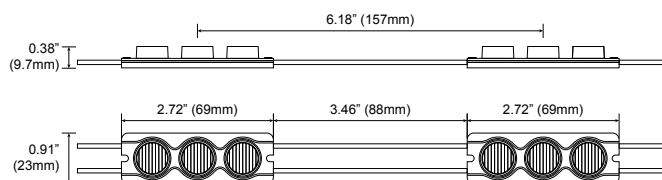
Starux's most cost-efficient model and easy installation with double sided 3M tape.

Designed durable cover that withstands harsh environment and protects the LED.

SPECIFICATIONS

Model	BOX3 Edge 1.5W	Module Spacing	2 pcs/ft
Colors	6800K	Demension	2.5" x 0.9" x 0.38"
Lumens	135 lm/Mod	Weight	15g
Power	1.5W	Max in series	20 Mods
Input Voltage	12V DC	Operating Temp.	-4°F ~ 122°F / -20°C ~ 50°C
CRI	>80 Ra	Life Time	40,000
Beam Angle	20° x 30°	IP Rating	IP65 Waterproof

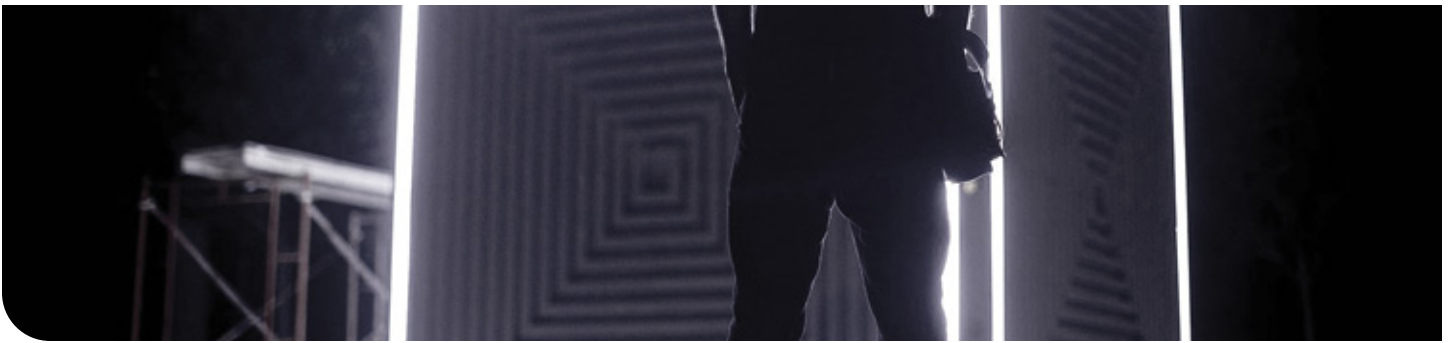
DIMENSION



SAMPLE TEST

FABERIC	FABERIC METHOD	Lighting Distance (m)	Light Box Depth H (cm)	Illumination (LUX)	Density pcs x m	Power W/m²
White sofe film	2 Sides	0.6	10	1553-1684	12 x 2	60
		0.8	10	1431-1165	12 x 2	45
		1	10	886-1252	12 x 2	36

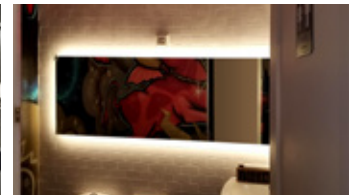
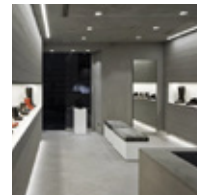
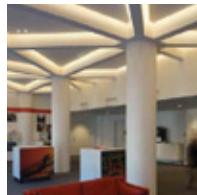
Lighting Installation



Update Living Area with New Lights



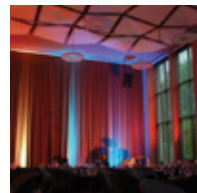
Let us add contemporary lighting to dramatically improve the appearance of your home or workspace. Showcase the fruits of your labor with flood lights, spot lights, and more. Give your garden/patio the attention it deserves with the lighting to match.



Commercial Lighting



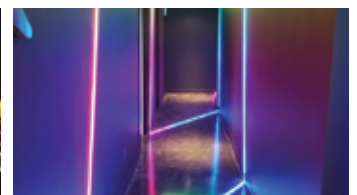
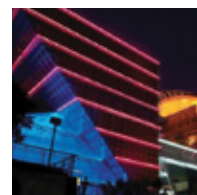
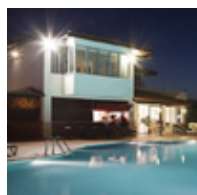
You can not underestimate the importance high quality lighting has on the success and the perception of a business. From creating an engaging atmosphere to sell your products and service to protecting the safety of your customers and employees, high quality lighting design is essential. Our experience lighting designers make your business our business. We take the time to understand your lighting requirements and design a lighting plan to make your business a success.



Architectural Lighting



In terms of function, safety and aesthetics, commercial outdoor lighting is an important part of your property from lighting the parking lot to your company's signage to it's entrance way. Our lighting designers understand that the public's perception of your business at night is often a critical factor to its success and plan the appropriate lighting to help your company prosper.



SMART SOLUTION

1179 Edgewater Ave. Ridgefield, NJ 07657 / Tel : (201) 840-0400 / neslight@gmail.com / info@neslight.com

