

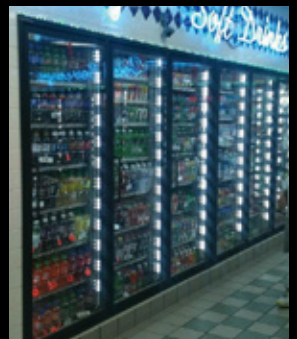
- High-quality and dependable modules that are trusted globally
- Wide range of products with varied price and performance options to satisfy any LED needs
- Strict Quality Control for products that are always reliable
- Automated production facility with nearly 0% defect rate in modules
- Every department consists of experienced professionals to provide exceptional customized service
- Fully controlled system from design to packing to ensure consistency and quality

# 2019 Channel Letter LEDs

[www.neslight.com](http://www.neslight.com)

**NC LED**

**NES** Light  
CUSTOM LED SOLUTION



# Channel Letter LEDs



Channel letter led is ideal for demanding retail, food service and utility applications such as consumer retail, restaurant menu boards, movie poster displays, jewelry stores, trade shows, office lobbies and conference, hanging from overhead

## CONTENTS

- 3P. LX Series
- 4P. V2 Series
- 5P. V2 RGB Series
- 6P. V1 Series
- 7P. V1 Mini & Neo X Wide

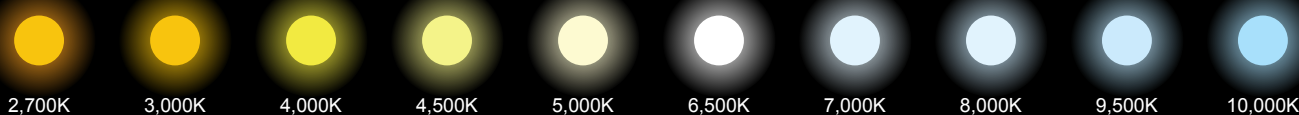


Since its establishment in 2002, NES Light has been concentrating on research and development in this cutting-edge technology and here you will find cost-effective and environment friendly lighting solutions (LED lamps use 80% to 90% less energy than the incandescent lamps they replace). Our goal is to save our environment and provide low cost with high quality LEDs to our customers. Also, we are ready for your custom applications. All executives and employees of NES Light are proud of our products and promise you our best to fit your needs. Our LEDs, - Low Voltage and electric currency product saves power more than 80% compare to Neon.



## LED Kelvin Color

WARM ← → COOL



160° ANGLE

140° ANGLE

120° ANGLE

170° ANGLE

**V1 SERIES**

**V2 SERIES**

**LX SERIES**

**NEO X WIDE**

## LX ECO3S POWER BY SAMSUNG LED



Operating Power : DC 12V  
Power Dissipation : 0.72W / 1.2W  
Dimensions : 2.6L x 0.6W x 0.3H inch

Viewing Angle : 120°  
Waterproofing Rate : IP68  
Module/ft : 2 Modules

UL E347462 CE RoHS 3 YEAR 50,000hrs 120° IP68

Model	Available Color Temp.	Lumen/ft	Watts/ft	Watts/Module	Efficacy (lm/W)	60W Power Supply Load
LX-ECO3S-HP-SS2835	9500K	216 lm	2.4W	1.2W	90 lm	56 Modules
LX-ECO3S-RED	620-625K	40 lm	1.44W	0.72W	27 lm	71 Modules
LX-ECO3S-GREEN	520-525K	80 lm	1.44W	0.72W	56 lm	71 Modules
LX-ECO3S-BLUE	460-465K	18 lm	1.44W	0.72W	12 lm	71 Modules
LX-ECO3S-YELLOW	590-595K	30 lm	1.44W	0.72W	21 lm	71 Modules

## FEATURES

- NC LED's best selling model
- 120 degree angle lens with compact design
- Ensures excellent transmittance and uniform lighting
- Specially designed durable polycarbonate cover that withstands harsh environment and protects the LED
- High luminous efficacy
- Easy installation with double sided 3M tape and screw holes for extra security
- IP68 Waterproof
- Approved by UL, CE, RoHS / LED provided by Samsung

## V2 ECO3S LW2 SS 1.0W POWER BY SAMSUNG LED



Operating Power : DC 12V  
Power Dissipation : 1.0W  
Dimensions : 2.6L x 0.6W x 0.4H inch

Viewing Angle : 140°  
Waterproofing Rate : IP68  
Module/ft : 2 Modules

UL E347462 CE RoHS 3YEAR 50,000hrs 140° IP68

Model	Available Color Temp.	Lumen/ft	Watts/ft	Watts/Module	Efficacy (lm/W)	60W Power Supply Load
ECO3S-LW2-SS	3000K, 4000K, 5000K 6500K, 9500K	186 lm	2.0W	1.0W	93 lm	51 Modules

### FEATURES

- NC LED's most cost-efficient model
- 140 degree angle lens that spreads light evenly for no hot spots
- Ensures excellent transmittance and uniform lighting
- Specially designed durable polycarbonate cover that withstands harsh environment and protects the LED
- High luminous efficacy guaranteed up to 93 lm/W
- Easy installation with double sided 3M tape and screw holes for extra security
- IP68 Waterproof
- Approved by UL, CE, RoHS / LED provided by Samsung

## V2 ECO3S LW2



Operating Power : DC 12V  
Power Dissipation : 0.72W / 1.0W  
Dimensions : 2.6L x 0.6W x 0.4H inch

Viewing Angle : 140°  
Waterproofing Rate : IP68  
Module/ft : 2 Modules

UL E347462 CE RoHS 3YEAR 50,000hrs 120° IP68

Model	Available Color Temp.	Lumen/ft	Watts/ft	Watts/Module	Efficacy (lm/W)	60W Power Supply Load
ECO3S-LW2-NS-0.72W	3000K, 6500K, 10000K	130 lm	1.44W	0.72W	90 lm	71 Modules
ECO3S-LW2-NS-1.0W	10000K	160 lm	2.0W	1.0W	80 lm	51 Modules
ECO3S-LW2-RED	620-625K	38 lm	1.44W	0.72W	26 lm	71 Modules
ECO3S-LW2-GREEN	520-525K	92 lm	1.44W	0.72W	64 lm	71 Modules
ECO3S-LW2-BLUE	460-465K	18 lm	1.44W	0.72W	13 lm	71 Modules
ECO3S-LW2-YELLOW	590-595K	24 lm	1.44W	0.72W	17 lm	71 Modules

### FEATURES

- NC LED's most cost-efficient model
- 140 degree angle lens that spreads light evenly for no hot spots
- Ensures excellent transmittance and uniform lighting
- Specially designed durable polycarbonate cover that withstands harsh environment and protects the LED
- High luminous efficacy guaranteed up to 90 lm/W
- Easy installation with double sided 3M tape and screw holes for extra security
- IP68 Waterproof
- Approved by UL, CE, RoHS



**V2 RGB3 LW2**

Operating Power : DC 12V  
 Power Dissipation : 0.72W  
 Dimensions : 2.6L x 0.6W x 0.4H inch  
 Viewing Angle : 140°  
 Waterproofing Rate : IP68  
 Module/ft : 2 Modules

**IP68**

Model	Available Color Temp.	Lumen/ft	Watts/ft	Watts/Module	Efficacy (lm/W)	60W Power Supply Load
RGB3-LW2- FUTC50	R : 620-625nm G : 520-525nm B : 460-465nm	43.2 lm	1.44W	0.72W	30 lm	71 Modules

**PANORAMA**

Operating Power : DC 12V  
 Power Dissipation : 0.72W  
 Dimensions : 2.6L x 0.6W x 0.4H inch  
 Viewing Angle : 140°  
 Waterproofing Rate : IP68  
 Module/ft : 2 Modules

**IP68**

**PANORAMA**

Model	Available Color Temp.	Lumen/ft	Watts/ft	Watts/Module	Efficacy (lm/W)	60W Power Supply Load
RGB3-LW2-PANORAMA	R : 620-625nm G : 520-525nm B : 460-465nm	43.2 lm	1.44W	0.72W	30 lm	71 Modules

**TWIN**

Operating Power : DC 12V  
 Power Dissipation : 0.72W  
 Dimensions : 2.6L x 0.6W x 0.4H inch  
 Viewing Angle : 140°  
 Waterproofing Rate : IP68  
 Module/ft : 2 Modules

**IP68**

**TWIN**

Model	Available Color Temp.	Lumen/ft	Watts/ft	Watts/Module	Efficacy (lm/W)	60W Power Supply Load
ECO3S-LW2-TWIN	3000K ~ 8000K	130 lm	2.88W	1.44W	90 lm	35 Modules

**FEATURES**

- NC LED's most cost-efficient full color model
- Full color with natural color projection
- 160 degree angle lens that allows application to lower channel letter signage
- Ensures excellent transmittance and uniform lighting
- Specially designed durable polycarbonate cover that withstands harsh environment and protects the LED
- Easy installation with double sided 3M tape and screw holes for extra security
- P68 Waterproof
- Approved by UL, CE, RoHS

## V1 ECO3S POWER BY SAMSUNG LED



Operating Power : DC 12V  
 Power Dissipation : 0.72W / 1.2W  
 Dimensions : 2.6L x 0.6W x 0.3H inch  
 Viewing Angle : 160°  
 Waterproofing Rate : IP68  
 Module/ft : 2 Modules

**IP68**

Model	Available Color Temp.	Lumen/ft	Watts/ft	Watts/Module	Efficacy (lm/W)	60W Power Supply Load
ECO3S-HW	6500K, 9500K	240 lm	2.4W	1.2W	100 lm	52 Modules

## V1 ECO2S POWER BY SAMSUNG LED



Operating Power : DC 12V  
 Power Dissipation : 0.72W  
 Dimensions : 1.5L x 0.6W x 0.4H inch  
 Viewing Angle : 160°  
 Waterproofing Rate : IP68  
 Module/ft : 3 Modules

**IP68**

Model	Available Color Temp.	Lumen/ft	Watts/ft	Watts/Module	Efficacy (lm/W)	60W Power Supply Load
ECO2S-HW	6500K, 9500K	150 lm	1.44W	0.72W	70 lm	71 Modules

## V1 ECO4S POWER BY SAMSUNG LED



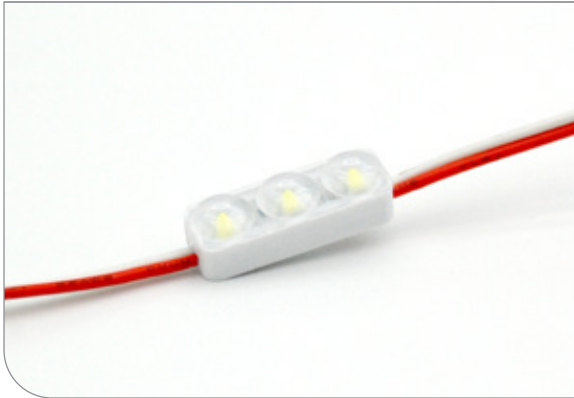
Operating Power : DC 12V  
 Power Dissipation : 1.44 / 1.8W  
 Dimensions : 1.6L x 1.6W x 0.4H inch  
 Viewing Angle : 160°  
 Waterproofing Rate : IP68  
 Module/ft : 2 Modules

**IP68**

Model	Available Color Temp.	Lumen/ft	Watts/ft	Watts/Module	Efficacy (lm/W)	60W Power Supply Load
ECO4-HW	9500K	248 lm	3.6W	1.8W	68 lm	28 Modules

## FEATURES

- NC LED's high performance wide angle model
- 160 degree wide angle lens that spreads light evenly for no hot spots
- Ensures excellent transmittance and uniform lighting
- Specially designed durable polycarbonate cover that withstands harsh environment and protects the LED
- High luminous efficacy
- Easy installation with double sided 3M tape and screw holes for extra security
- IP68 Waterproof
- Approved by UL, CE, RoHS / **LED provided by Samsung**

**V1 MINI LW**

Operating Power : DC 12V  
 Power Dissipation : 0.48W  
 Dimensions : 1.1L x 0.4W x 0.3H inch

Viewing Angle : 160°  
 Waterproofing Rate : IP68  
 Module/ft : 4 Modules

**IP68**

Model	Available Color Temp.	Lumen/ft	Watts/ft	Watts/Module	Efficacy (lm/W)	60W Power Supply Load
MINI3-LW-NS	2700, 6500K, 10000K	176 lm	1.92W	0.48W	92 lm	106 Modules
MINI3-LW-RED	620-625K	38 lm	1.92W	0.48W	26 lm	106 Modules
MINI3-LW-GREEN	520-525K	92 lm	1.92W	0.48W	64 lm	106 Modules
MINI3-LW-BLUE	460-465K	18 lm	1.92W	0.48W	13 lm	106 Modules
MINI3-LW-YELLOW	590-595K	24 lm	1.92W	0.48W	17 lm	106 Modules

**FEATURES**

- NC LED's versatile wide angle lens with compact design
- 160 degree angle lens which reduces numbers of modules needed
- Ensures excellent transmittance and uniform lighting
- Specially designed durable polycarbonate cover that withstands harsh environment and protects the LED
- High luminous efficacy
- Easy installation with double sided 3M tape and screw holes for extra security
- IP68 Waterproof
- Approved by UL, CE, RoHS

**NEO X WIDE 170°**

Operating Power : DC 12V  
 Power Dissipation : 1.2W  
 Dimensions : 1.4L x 0.6W x 0.4H inch  
 Viewing Angle : 170°  
 Waterproofing Rate : IP68  
 Module/ft : 2 Modules

**IP68**

Model	Available Color Temp.	Lumen/ft	Watts/ft	Watts/Module	Efficacy (lm/W)	60W Power Supply Load
NEO-X-WIDE	9500K	156 lm	2.4W	1.2W	87 lm	42 Modules

**FEATURES**

- NC LED's versatile wide angle lens with compact design
- 170 degree angle lens which reduces numbers of modules needed
- Ensures excellent transmittance and uniform lighting
- Specially designed durable polycarbonate cover that withstands harsh environment and protects the LED
- High luminous efficacy
- Easy installation with double sided 3M tape and screw holes for extra security
- IP68 Waterproof
- Approved by UL, CE, RoHS



---

### **New Jersey**

NES Light INC.  
1179 Edgewater Ave. Ridgefield, NJ 07657  
Tel : (201) 840-0400  
E-mail : [neslight@gmail.com](mailto:neslight@gmail.com)  
[info@neslight.com](mailto:info@neslight.com)

### **Virginia**

HIZ SOLUTION INC.  
7535 Little River Turnpike #120-C, Annandale, VA 22003  
Tel : (703) 898-6836  
E-mail : [info@hizdesign.com](mailto:info@hizdesign.com)